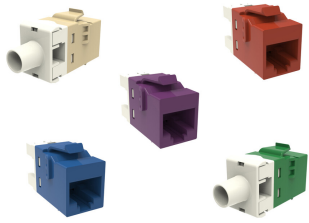


## Base Product



## KJ-Series Modular Jack, RJ45, Cat5e Unshielded

## Product Classification

## Regional Availability

Asia | Australia/New Zealand | EMEA | Latin America | North America

## Portfolio

CommScope®

## Product Type

Modular jack

## Product Series

KJ Series

## General Specifications

## ANSI/TIA Category

5e

## Cable Type

Unshielded

## Conductor Type

Solid | Stranded

## Mounting

Hubbell® faceplates | Leviton® faceplates | Panduit® faceplates

## Outlet Type

Keystone

## Termination Tool

110 Punchdown tool | SL Termination tool

## Termination Type

IDC

## Transmission Standards

ANSI/TIA-568-C.2 | ISO/IEC 11801 Class D

## Wiring

T568A | T568B

## Dimensions

## Panel Cutout, recommended

14.79 x 19.31 mm (0.58 x 0.76 in)

## Panel Thickness, recommended

1.6 mm | 0.063 in

## Height

16.13 mm | 0.635 in

## Width

16.48 mm | 0.649 in

## Depth

30.48 mm | 1.2 in

## Compatible Insulated Conductor Diameter, maximum

1.27 mm | 0.05 in

## Contact Plating Thickness

1.27 µm

# 2291217

---

**Compatible Conductor Gauge, solid** 24–22 AWG

**Compatible Conductor Gauge, stranded** 26–24 AWG

## Electrical Specifications

**Remote Powering** Fully supports the safe delivery of power over LAN cabling described by IEEE 802.3bt (Type 4) and complies with the unmating under electrical load requirements prescribed by IEC 60512-99-002

**PoE Durability** Supports IEEE 802.3bt Type 4 (90 W) applications after 3000 plug to jack mating cycles

## Material Specifications

**Contact Base Material** Beryllium copper

**Contact Plating Material** Gold

**Material Type** Polycarbonate

## Mechanical Specifications

**Plug to Jack Mating Cycles** Complies to IEC 60603-7 series

## Environmental Specifications

**Flammability Rating** UL 94 V-0