

# OMX Optical Distribution Frame

COMMSCOPE®

# Introduction

The OMX solution gives the capability to splice and patch fibers in a 600mm x 300mm (ETSI) footprint. It's a flexible optical distribution frame that enables the service providers to quickly respond to the changing needs of their customers. The OMX fibre frame protects fibre cable and connections through use of angled adapter/retainers and design features that maintain correct bend radius throughout the frame.

## FEATURES AND BENEFITS

### MODULAR SOLUTION

- Provides greater flexibility for a variety of applications
  - Saves costs by standardising on one flexible solution

### PERFORMANCE DENSITY

- Accommodates up to 576 terminations and splices within 600mm x 300mm footprint
  - Saves valuable floor space

### TOTAL FRONT ACCESS FRAME

- Allows installation back-to-back or against a wall
  - Saves valuable floor space

### SUPERIOR CABLE MANAGEMENT

- Protects cables and connectors; reduces reconfiguration time
  - Saves maintenance costs, improves reliability

### COMPLETELY ENCLOSED AND LOCKABLE

- Provides additional fibre protection and security
  - Improves network reliability through controlled access to fibres

The OMX's modular design provides flexibility to meet the specific needs of the service provider. Each solution will be a combination of the following parts.

## OMX FRAME

The OMX frame is 600mm x 300mm (ETSI) and has 10 mounting positions for the termination, splice and jumper storage modules.

## OMX TERMINATION MODULE

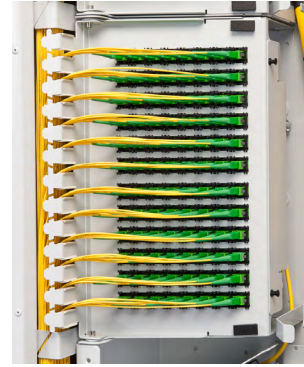
The OMX termination modules are available with 96(SC) or 144(LC) adapters. The modules are available for SC and LC connectors.

## OMX SPLICE MODULE

The OMX splice module provides protection and a mounting location for CommScope's round splice trays. Each splice module is two mounting positions tall and holds 24 splice trays. Each splice tray can house up to 24 splices.

## OMX SLACK STORAGE SOLUTIONS

The OMX jumper storage module enables storage of fibre-optic jumper slack within an OMX frame. Each jumper storage module is one module position tall. The Interbay Management Panel provides off-frame storage of jumper slack. CommScope recommends the use of 1.8mm patch cords to maximise the cable management potential of the OMX.



OMX termination module



OMX splice module



OMX slack storage solution

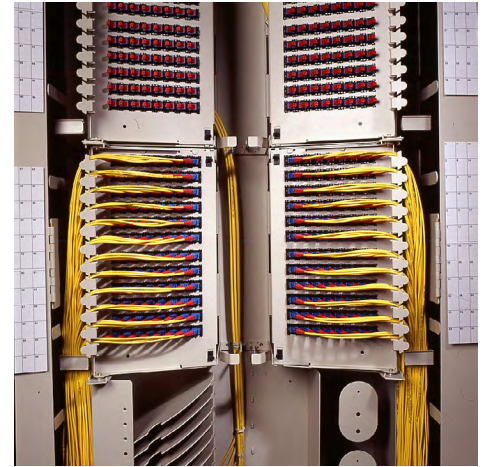
## OMX FRAME SOLUTION

The OMX frame is 600mm x 300mm (ETSI) and has 10 mounting positions for the termination, splice and jumper storage modules.

The OMX frame section provides mounting locations for termination, splice and storage modules. It is a completely front-facing frame; all mounting, maintenance and cable access is done on the front of the frame. A lower trough allows multiple frames to be mounted in a continuous lineup. The frame is shipped with lockable front doors.

### ORDERING INFORMATION

Description	Dimensions (HxWxD)	Catalog number
OMX 600 frame section	2200mm x 600mm x 300mm	MX6-TSF6030

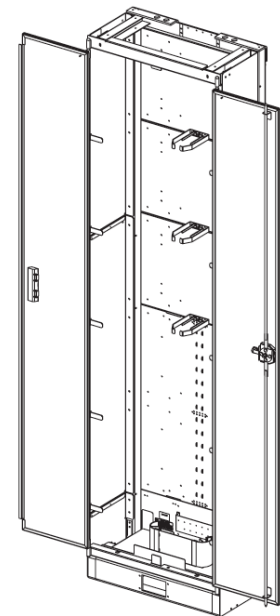


## TERMINATION MODULE WITH ADAPTERS ONLY

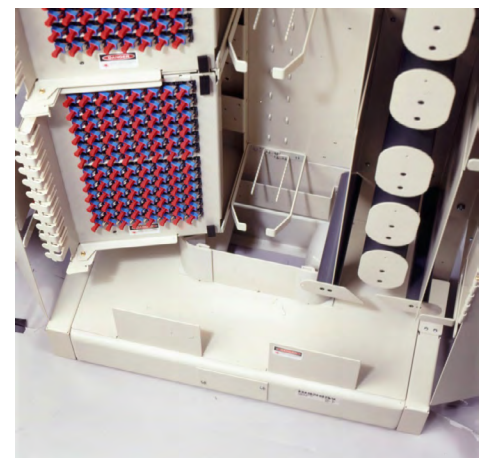
The OMX termination module with adapters only is available with 96 or 144 adapters. Modules may be ordered with a “left” orientation (mounts on the left side of the frame) or a “right” orientation (mounts on the right side of the frame). Commscope recommends the use of 1,8mm patch cords to minimize the cable management potential of the OMX.

### ORDERING INFORMATION

Description	Catalog number
96-position, SC UPC, Left, no pigtails	MX6-TMB7L00
96-position, SC UPC, Left, no pigtails, Horizontal numbering	MX6-TMB7L00-H
96-position, SC UPC, Right, no pigtails	MX6-TMB7R00
96-position, SC UPC, Right, no pigtails, Horizontal numbering	MX6-TMB7R00-H
96-position, SC APC, Left, no pigtails, Horizontal numbering	MX6-TMBLL00-H
96-position, SC APC, Right, no pigtails, Horizontal numbering	MX6-TMBLR00-H
144-position, LC UPC, Left, no pigtails	MX6-TMCKL00
144-position, LC UPC, Left, no pigtails, Horizontal numbering	MX6-TMCKL00-H
144-position, LC UPC, Right, no pigtails	MX6-TMCKR00
144-position, LC UPC, Right, no pigtails, Horizontal numbering	MX6-TMCKR00-H



OMX 600 Frame Section



96-Position

## SPLICE MODULE

The OMX splice module provides mounting positions and protection for 24 splice trays. The splice module is the height of two termination modules. The module may be ordered with a “left” orientation (mounts on the left side of the frame) or a “right” orientation (mounts on the right side of the frame). Splice modules must be mounted to the frame starting in the bottom position.

### ORDERING INFORMATION

Description	Catalog number
OMX (24) tray splice module	
Height = 2 module positions	
Right orientation	MX6-24SPNL-R
Left orientation	MX6-24SPNL-L



## SPLICE TRAY

The round splice tray used in the OMX simplifies installation and maintenance. The tray stores up to three metres of slack allowing the installer to roll the tray away from the frame to perform splicing.

### ORDERING INFORMATION

Description		Catalog number
Number of Splices	12	FST-DRS12-HS
	24	FST-DRS24-HS



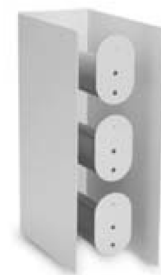
# Accessories

## OMX JUMPER STORAGE MODULE

The OMX jumper slack storage module provides for jumper storage functionality within the frame. Up to five jumper storage modules can be mounted on one side of an OMX frame. Jumper storage modules must be mounted to the frame starting in the bottom position.

### ORDERING INFORMATION

Description	Catalog number
OMX 600 jumper storage module (OMX 600 only)	MX6-JSM00000



## OMX INTERBAY MANAGEMENT PANEL

The OMX interbay management panel provides slack storage between frames for interconnect or cross-connect jumpers. **The interbay management panel is necessary when no jumper storage is provided on the OMX frame itself.**

### ORDERING INFORMATION

Description	Dimensions (HxWxD)	Catalog number
150mm OMX interbay management panel	2200mm x 150mm x 300mm	MX6-IMP150

## OMX END GUARD

The OMX end guard provides protection for the fibres entering and exiting frames at the ends of a lineup. The end guard attaches directly to the interbay management panel, but does not add to the overall frame width. End guards are not required when ordering splice bays or bays without external interbay management panels. The OMX end guard can be mounted to both the OMX 600 and OMX 800.

### ORDERING INFORMATION

Description	Dimensions (HxWxD)	Catalog number
OMX end guard	2200mm x 300mm	MX6-ENDGRD

## OMX CABLE CLAMP

The OMX cable clamp is used to secure the OSP/intrafacility cable to the base or top of the frame.

### ORDERING INFORMATION

Description	Catalog number
OMX cable clamp for <b>top entry cables</b> ; clamps up to 3 cables	OSP-CLPFEC-LG
OMX cable clamp for <b>underfloor cable entry</b>	MX6-ACC001

## RACK INSTALLATION KITS

### ORDERING INFORMATION

Description	Catalog number
Rack installation kit for concrete floor, kit includes: (2) M8 bolts, 90mm (4) M8 nuts (8) flat washers (4) lock washers shims and anchor plates	RAC-MX0616
Rack installation kit for raised floor, kit includes: (4) threaded rods M12 x 1m (12) heavy nuts, lock and flat washers (4) nuts with springs, M12 (2) 1.8m unistrut (1) anchor kit	RAC-MX0615

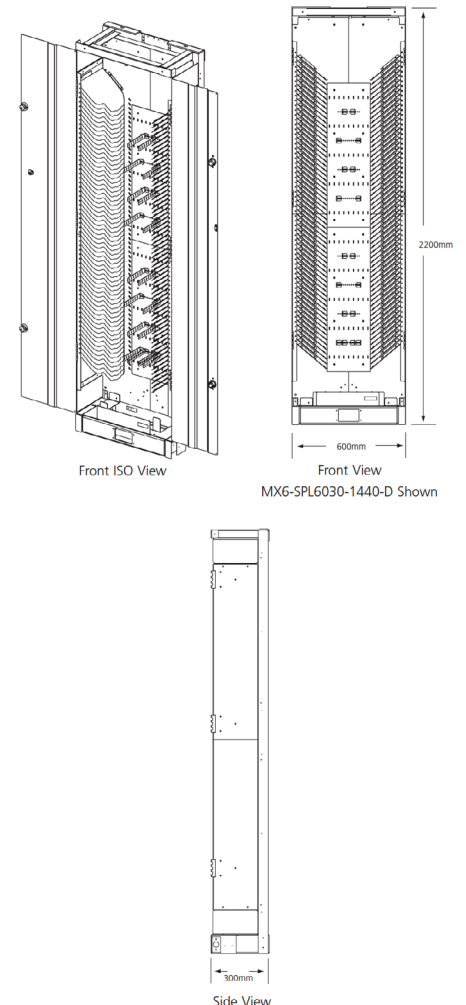
## SPLICE BAY

The OMX 600 splice bay is a high-density splice solution, housing up to 1440 splices within a 600mm x 300mm (ETSI) footprint. Shipped complete with the necessary cable management, the splice bay features slots which secure and protect the round splice trays. The splice bay can hold up to 60 twelve-fibre splice trays on each vertical. The bay may be ordered for applications in which the cables enter from above or below. The OMX 600 splice bay is shipped with lockable front doors.

### ORDERING INFORMATION

Description	Dimensions (HxWxD)	Catalog number
Fully configured splice bay; accommodates up to 1440 splices	2200mm x 600mm x 300mm	
Cable enters from <b>underfloor</b>		MX6-SPL6030-1440-D D7Z4
Cable enters from <b>top</b>		MX6-SPL6030-1440-U7Z4
<b>Splice bay cable clamps</b> For OSP cable (maximum cable outer diameter: 10mm to 28mm)		FEC-ACCCLMP01
For IFC cable (maximum cable outer diameter: 12.7mm to 25.4mm)		MX6-SPLIFCCLMP

To order splice trays, see page 5.



CommScope pushes the boundaries of communications technology with game-changing ideas and ground-breaking discoveries that spark profound human achievement. We collaborate with our customers and partners to design, create and build the world's most advanced networks. It is our passion and commitment to identify the next opportunity and realize a better tomorrow. Discover more at [commscope.com](https://commscope.com)

**COMMSCOPE®**

---

[commscope.com](https://commscope.com)

Visit our website or contact your local CommScope representative for more information.

© 2019 CommScope, Inc. All rights reserved.

Unless otherwise noted, all trademarks identified by ® or ™ are registered trademarks, respectively, of CommScope, Inc. This document is for planning purposes only and is not intended to modify or supplement any specifications or warranties relating to CommScope products or services. CommScope is committed to the highest standards of business integrity and environmental sustainability with a number of CommScope's facilities across the globe certified in accordance with international standards, including ISO 9001, TL 9000, and ISO 14001. Further information regarding CommScope's commitment can be found at [www.commscope.com/About-Us/Corporate-Responsibility-and-Sustainability](https://www.commscope.com/About-Us/Corporate-Responsibility-and-Sustainability).

BR-112137.3-EN (04/19)